



EMBRACEABLE

*A Retrospective of Enriching Works
by Bettina Hubby 2011–2020*

*August 27–September 27, 2020
online*

LOOK HERE

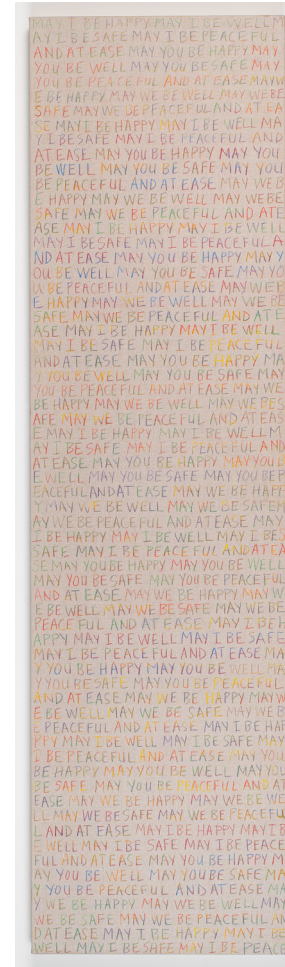
Facing oneself within and without.



Bettina Hubby
Hubby's Ho'oponopono, 2020
Autosuggestion Texts series
Gouache on linen covered panel
5'4" x 17.25" (Hubby's own dimensions)
BH0303



Bettina Hubby
You lookin' at me, 2011
Vinyl decal
78.5 x 18 inches
BH0350



Bettina Hubby
LOVING KINDNESS MEDITATION, 2020
Autosuggestion Texts series
Rainbow colored pencil on linen covered panel
5'4" x 17.25" (Hubby's own dimensions)
BH0381

SPIRITED

Not so subliminal joy and serenity.



Bettina Hubby
Jumping with Birds and Butterflies, 2018
Lenticular print
19 x 28 inches, framed
Edition of 3
BH2829



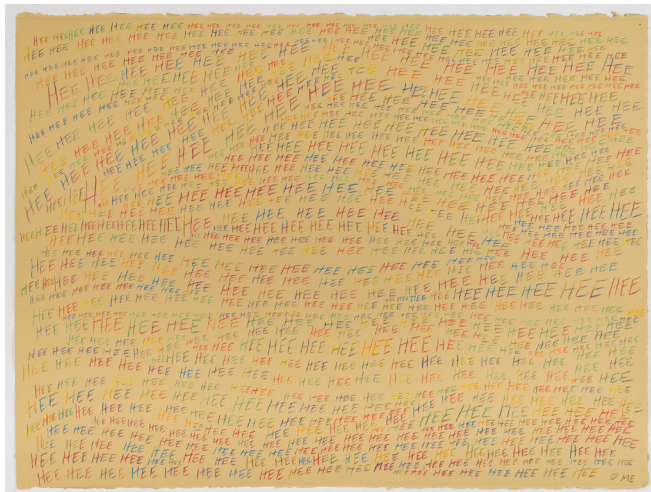
Bettina Hubby
What Matters Most Is How You See Yourself, 2018
Digital collage on photographic banner with hole
72 x 48 inches
Edition of 9
BH0334



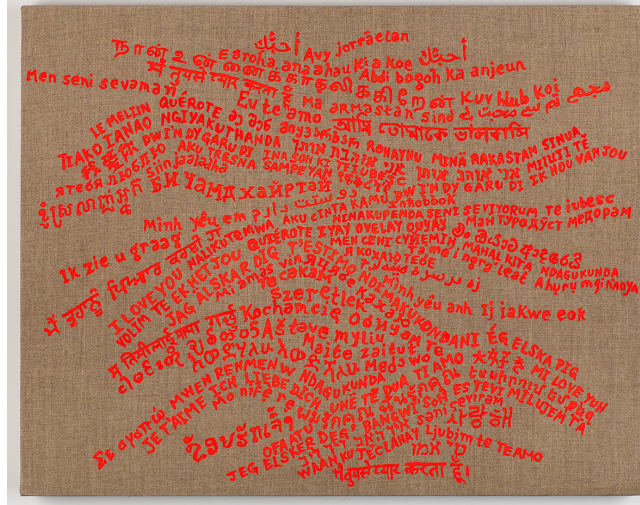
Bettina Hubby
Jumping with Cats, 2018
Lenticular print
19 x 28 inches, framed
Edition of 3
BH2830

CHOOSE YOUR WORDS

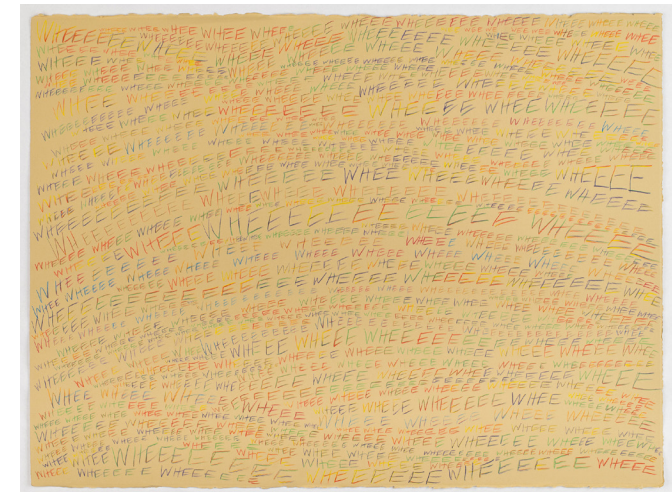
Prompts to switch your gears



Bettina Hubby
HEE HEE HEE..., 2020
Autosuggestion Texts series
Rainbow pencil on cotton rag paper
22.5 x 30.125 inches
BH0376



Bettina Hubby
I LOVE YOU, in multiple languages, 2020
Autosuggestion Texts series
Acrylic on linen
22 x 28 inches
BH0380



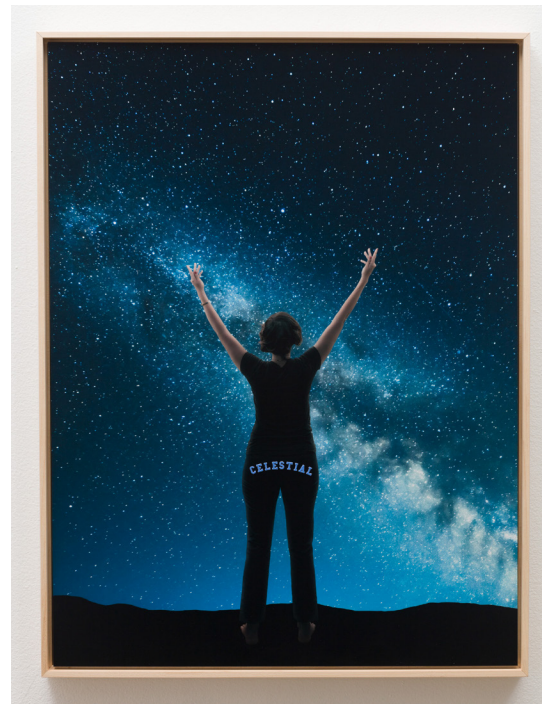
Bettina Hubby
WHEE WHEE WHEE..., 2020
Autosuggestion Texts series
Rainbow pencil on cotton rag paper
22.5 x 30.125 inches
BH0374

POWER POSE

Posture for a brain change.



Bettina Hubby
Majestic, 2019
Positively Earnest series
Lamda print with flocked lettering
23.5 x 31 inches, framed
BH2869



Bettina Hubby
Celestial, 2020
Positively Earnest series
Lamda print with flocked lettering
31 x 23.5 inches, framed
BH2864



Bettina Hubby
Valiant, 2019
Positively Earnest series
Lamda print with flocked lettering
23.5 x 31 inches, framed
BH2868

PRESCRIPTIONS

Soft palliative advice



Bettina Hubby
RELAX ETC, RELEASE TENSIONS REGULARLY, 2015
Relax #pillowstellingmetodothings series
Colored pencil, ink, vellum, and collage on paper
5.25 x 11 inches
BH2165



Bettina Hubby
*RELAX YOU DESERVE IT IT'S GOOD FOR YOU
AND IT TAKES LESS TIME THAN YOU THINK*, 2015
Relax #pillowstellingmetodothings series
Colored pencil, vellum, and collage on paper
7 x 7.5 inches
BH0264



Bettina Hubby
LEAVE YOUR CELL PHONE AT HOME AT TIMES, 2015
Relax #pillowstellingmetodothings series
Colored pencil, ink, vellum, and collage on paper
5.25 x 11 inches
BH0347



Bettina Hubby
Sleep then endless sleep, 2015
Everything Irreversible, Anything Diaphanous series
 Colored pencil, ink, and collage on paper
 7 works, 10 x 7.25 inches each
 available as a series only
 BH0398



Bettina Hubby
Full Metal Jacket, 2011
Pretty Limber series
 Collage on paper
 7 x 17 inches
 BH1092



Bettina Hubby
Everything irreversible, 2015
Everything Irreversible, Anything Diaphanous series
 Colored pencil, ink, and collage on paper
 7 works, 10 x 7.25 inches each
 available as a series only
 BH0398

BACK TO BED

A feast for the senses.



Bettina Hubby
Fruit tray pillow, 2015
THE SEXUAL BRONZE SHOW series
Dye sublimation print on brushed aluminum
17.75 x 24.5 x 5 inches
Edition of 5
BH2460



Bettina Hubby
Sex without the people (legs akimbo), 2012
Sex without the people series
Fleece photo blanket with acrylic paint
59 x 48 inches
BH1134



Bettina Hubby
Fruit tray pillow, 2015
THE SEXUAL BRONZE SHOW series
Dye sublimation print on brushed aluminum
17.75 x 24.5 x 5 inches
Edition of 5
BH2461

MATCHMAKER

Celebrating all couples.



Bettina Hubby
clam and lipstick, 2015
THE SEXUAL BRONZE SHOW series
Archival pigment print
13 x 13 inches (diptych, each)
Edition of 10
BH2454



Bettina Hubby
sponge puddle, 2015
THE SEXUAL BRONZE SHOW series
Bronze with patina
BH241



Bettina Hubby
clam and lipstick, 2015
THE SEXUAL BRONZE SHOW series
Archival pigment print
13 x 13 inches (diptych, each)
Edition of 10
BH2454

VISION BOARDS

Imagining alternate realities.



Bettina Hubby
White House Gardening and Key, 2019
White House lawn series
 Dye sublimation print on brushed aluminum
 15 x 30 inches (diptych, each)
 Edition of 3 plus 2 APs
 BH0308



Bettina Hubby
Thanks for the Mammeries, with animals, 2017
With Animals series
 Dye sublimation print on brushed aluminum
 16 x 20 inches
 Edition of 9 plus 2 APs
 BHP022



Bettina Hubby
White House Gathering and Key, 2019
White House lawn series
 Dye sublimation print on brushed aluminum
 15 x 30 inches (diptych, each)
 Edition of 3 plus 2 APs
 BH0306

HUBBY ON *EMBRACEABLE*:

“Over the past 10 years my work has evolved from abstraction into message. Always with playfulness, I work to remind myself and others of the inherent power we each have to transform our world. Especially now, as we see our collective ache for change made manifest, it comes time to take joyous action.”

AN EXCLUSIVELY ONLINE EXHIBITION:

HubbyCo is delighted to present an online exhibition featuring works from 2011-2020 by Bettina Hubby. Hubby offers spirited counteractions in this historic moment that amuse, provoke, and motivate. *Embraceable* features power poses, aspirational language, positive visualization alternatives, and subliminal signaling.

ENJOY MAKING A DIFFERENCE.

HubbyCo is honored to give Care.org 20% of all sales. This essential organization is known for their unshakable commitment to the dignity of people around the globe. *Embraceable* offers both the joy in collecting and the joy of giving back for the collective good.

EMBRACEABLE

A Retrospective of Enriching works by Bettina Hubby 2011-2020

Artist's Bio

Bettina Hubby (b. 1968, New York City) earned her MFA in 1995 from the School of Visual Arts in New York and moved to Los Angeles in 1999, where she currently lives and works.

Hubby's work has been widely exhibited including solo exhibitions at Klowden Mann (Los Angeles), The Erotic Heritage Museum (Las Vegas), and Lora Reynold Gallery (Austin). Group exhibitions in Los Angeles include Klowden Mann, Santa Monica Museum of Art, LAND (Los Angeles Nomadic Division), ForYourArt, Side Street Projects, and The Center for the Arts Eagle Rock. Hubby and her projects have been featured in numerous media outlets including *ARTFORUM*, *The New York Times*, *T Style Magazine*, *W Magazine*, *NPR*, *Los Angeles Times*, *Curbed*, and *LAWeekly*.

Hubby's practice is wide-ranging, including collage, drawing, printmaking, sculpture, video, VR and photography. While humor is what grounds her practice, she explores themes of ritual, construction, identity, community, and the constantly changing notion of self and other. In addition to her individual practice, Hubby is known for her extensive collaborative projects and curatorial work—engaging diverse communities and often existing in settings that challenge the conventions of exhibition spaces, celebrating collaboration and resisting easy categorization.

In alignment with the spirit of the artwork and HubbyCo's charitable ethos, the studio will be donating a percentage of all sales to organizations that aid in our collective good. For more information and inquiries on works or commissions, please contact sacha@hubbyco.com.

For full CV please visit hubbyco.com/curriculum-vitae.